

# 14 Carat Eye's

HOOK 14 Carat Eye's~



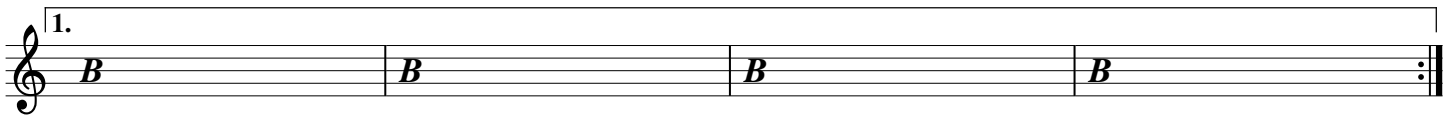
INT



A %



B



C



BRIDGE

D.S. time to 間奏

D.S.



間奏



Musical staff with four measures of chords: *F#7*, *F#7*, *B*, *B*.

**HOOK2** 14 Carat Eye's~

Musical staff with four measures of chords: *B*, [blank], [blank], [blank].

**INT2**

Musical staff with four measures of chords: *B*, *B*, *B*, *B*.

**A2**

Musical staff with four measures of chords: *B*, *B*, *B*, *B*.

Musical staff with four measures of chords: *F#7*, *F#7*, *B*, *B*.

**B2**

Musical staff with four measures of chords: *E7*, *E7*, *E7*, *E7*.

Musical staff with four measures of chords: *B*, *B*, *B*, *B*.

Musical staff with four measures of chords: *C#7*, *C#7*, *F#7*, *F#7*.

**C2**

Musical staff with four measures of chords: *G7*, *G7*, *B*, *B*.

Musical staff with two measures of chords: *F#7*, *F#7*.

**END**

Musical staff with four measures of chords: *B*, *B*, *B*, *B*.

Musical staff with four measures of chords: *B*, *B*, *B*, *B*.